

D A T A S H E E T

FlowPRA™ HLA Class II Screening Test

Flow Cytometric Reagents for Detection of Panel-Reactive Antibody (PRA) Against HLA Class II Antigens

Catalog #FL2-30

For In Vitro Diagnostic Use

LOT 023

Flow PRA II Beads Data Sheet

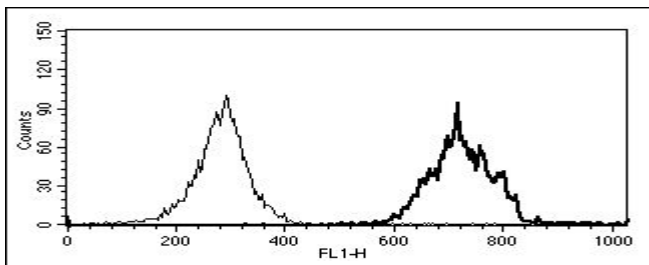
Changes from previous Lot: No change

Frequencies of HLA Class II Antigens in FlowPRA II Beads

Antigen	#	Antigen	#	Antigen	#	Antigen	#	Antigen	#
DRB1*01	4	DRB1*16	5	DQB1*02	8	DPB1*01	8		
DRB1*0103	2	DRB1*0301(17)	4	DQB1*04	8	DPB1*02	9		
DRB1*04	3	DRB1*0302(18)	3	DQB1*05	16	DPB1*03	4		
DRB1*07	5	DRB5* (51)	8	DQB1*06	6	DPB1*04	16		
DRB1*08	4	DRB3* (52)	20	DQB1*0301 (7)	8	DPB1*05	4		
DRB1*09	3	DRB4* (53)	9	DQB1*0302 (8)	1	DPB1*11	1		
DRB1*10	3			DQB1*0303 (9)	5	DPB1*13	2		
DRB1*11	3					DPB1*14	2		
DRB1*12	4					DPB1*17	1		
DRB1*13	5					DPB1*18	2		
DRB1*14	4					DPB1*19	1		
DRB1*15	4					DPB1*105	1		

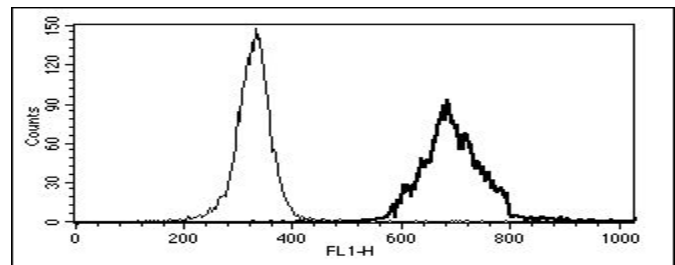
Lot #022

Negative Control Serum Positive Control Serum



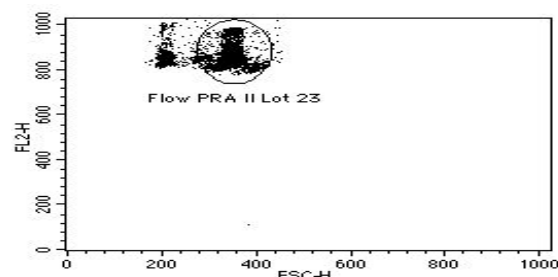
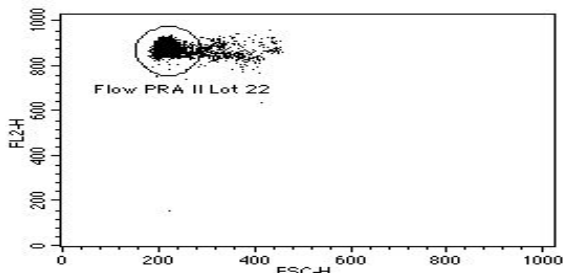
Lot #023

Negative Control Serum Positive Control Serum



Overlaid FL1 Histograms of FlowPRA II Beads (Lot 022) Reacting with Class II Positive Control Serum (Cat. # FL2-PC, Lot 016) and Negative Control Serum (Cat. #FL-NC, Lot 030)

Overlaid FL1 Histograms of FlowPRA II Beads (Lot 023) Reacting with Class II Positive Control Serum (Cat. # FL2-PC, Lot 016) and Negative Control Serum (Cat. #FL-NC, Lot 030)



FlowPRA II Lot 023 may display a larger bead population compared to previous FlowPRA II Lot 022.

™FlowPRA is a trademark of One Lambda, Inc