

Installation Guide

**TypeStream™ Visual NGS Analysis Software
Version 1.0**

Catalog #: TSVPGRX

**For Research Use Only.
Not for use in diagnostic procedures.**

For Research Use Only. This product is not intended to provide information for the diagnosis, prevention or treatment of disease or to aid in the clinical decision making process.

One Lambda Research Use Only software products are designed to assist personnel experienced in genotyping analysis. This software may be used to aid in research, but should not be used as the sole method for determining reportable research results. Research results must be carefully reviewed by a person qualified in genotyping. The laboratory director or technologist trained in histocompatibility testing is required to review all data to detect any problems with the software.

Please note that this document was prepared in advance of the TypeStream™ Visual NGS Analysis Software release. Therefore, you may notice slight differences in the content of the actual application screens.



One Lambda, Inc.
21001 Kittridge Street, Canoga Park, CA 91303 U.S.A.
T: 818.702.0042 F:818.702.6904

© 2017 Thermo Fisher Scientific Inc. All rights reserved. Luminex is a trademark of Luminex Corporation. Windows is a trademark of Microsoft Corporation. All other trademarks are the property of Thermo Fisher Scientific and its subsidiaries. Specifications, terms and pricing are subject to change. Not all products are available in all countries. Please consult your local sales representative for details.

Table of Contents

System Requirements	2
Minimum Software Required	2
Minimum Hardware Required.....	2
Security	2
Installing TypeStream Visual Software	3
Step 1: Insert the TypeStream Visual Software CD	3
Step 2: Insert Microsoft components (if applicable).....	3
Step 3: Install TypeStream Visual	8
Step 4: Connect to a Database	12
Connect to a Database	14
Install Security Token.....	16
Uninstalling TypeStream Visual Software.....	18
(Optional) Backup our TypeStream Visual Database	18
Uninstalling the TypeStream Visual Program	19
Appendix A.....	20
Checklist for Installation Configuration.....	20

System Requirements

Before you begin:

You will need Administrator level access on your computer to install TypeStream Visual software. If you do not have Administrator access, contact your system administrator for help with this installation.

Minimum Software Required

- Microsoft Windows™ 7.0 SP1, 64-bit OS
- Microsoft .NET 4.6.1 Framework
- Microsoft Visual C++ 2005 SP1 Redistributable package – included in installation
- Crystal Reports 13.0.17 Runtime for .Net 4.6.1 – included in installation
- The system requires Microsoft SQL 2014 Server – included in the installation

Minimum Hardware Required

Minimum required hardware for TypeStream Visual.

- The system shall support an 8-bit graphic adapter and display (for 256 simultaneous colors)
- The system requires a mouse or other Windows® compatible pointing device.
- The system shall operate on a VGA display with 1280 x 960 screen resolution.
- The system shall run on a 8-core processor or 4-core with hyperthreading.
- Minimum of 16GB RAM.

Microsoft SQL Server Considerations

Use the standalone installation process described in the [Appendix, Checklists for Installation Configurations](#). If you want to use a SQL Server from another location, one of two things must be done:

Note: The SQL Server Express version supplied on the TypeStream Visual program CD does not have all of the functionality of the full version of SQL Server. For example, it allows a maximum of 10 GB of storage space. There are a variety of SQL Server versions you can use with TypeStream Visual, so be sure to check the limitations of the version you plan to use. See your system administrator for further guidance and information on installing SQL Server.

Security

As a security measure, all users are required to obtain a computer-specific file before the application will accept files for analysis. These files can be obtained from One Lambda customer support group.

- On your computer go to Start > Control Panel > System.
- Obtain “Full computer name”
- Send full computer name to 1lambda-techsupport@thermofisher.com via email or by phone at 800-822-8824
- Tech Support will return a security token with ‘.sec’ file extension to you via email.
- Keep this file available. The following instructions include the placement of the security file.

Installing TypeStream Visual Software

Step 1: Insert the TypeStream Visual CD

If the installation process does not automatically start, open the drive containing the TypeStream Visual CD, and click the TSV_1.0_Setup.exe file. You must have administrator equivalent privileges to install the TypeStream Visual software. The installer will ask you for the destination location for the software.

Step 2: Insert Microsoft components (if applicable)

Once installation begins, the installer looks for the required components on your computer (Microsoft SQL Server and Microsoft .NET Framework) and automatically prompts you to install any missing component. If you already have these components on your computer, go to Step 3 to begin the TypeStream Visual installation process.

If you see the following requirements dialog box, click Install to start the installation process for the required component(s). If you do not see the dialog box in Figure 1, the required programs are already installed, and you may proceed to Step 3 to start TypeStream Visual installation.

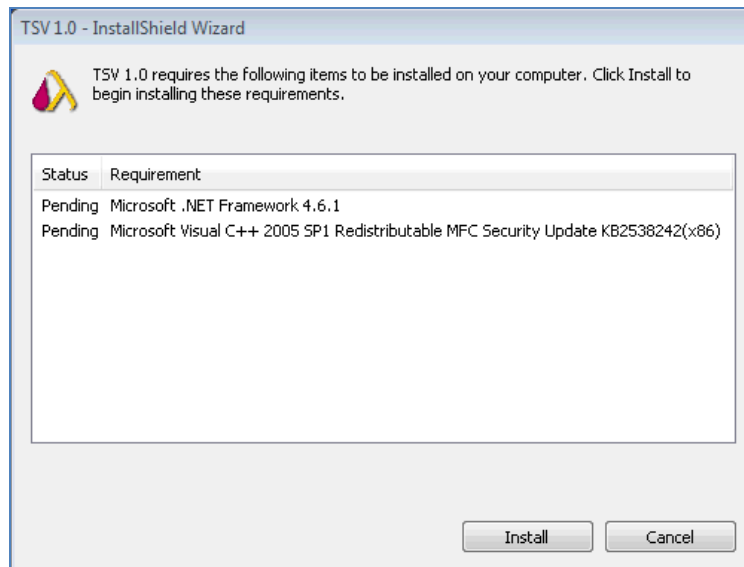


Figure 1

Note: In some cases, you may see a message asking you whether you want to reboot following the .NET installation. You do not need to reboot now, but should do so following the installation of TypeStream Visual.

If a version of Microsoft SQL Server with a TypeStream Visual instance is not detected on your computer, you will be prompted to install, as in Figure 2. Click the Yes button when prompted.

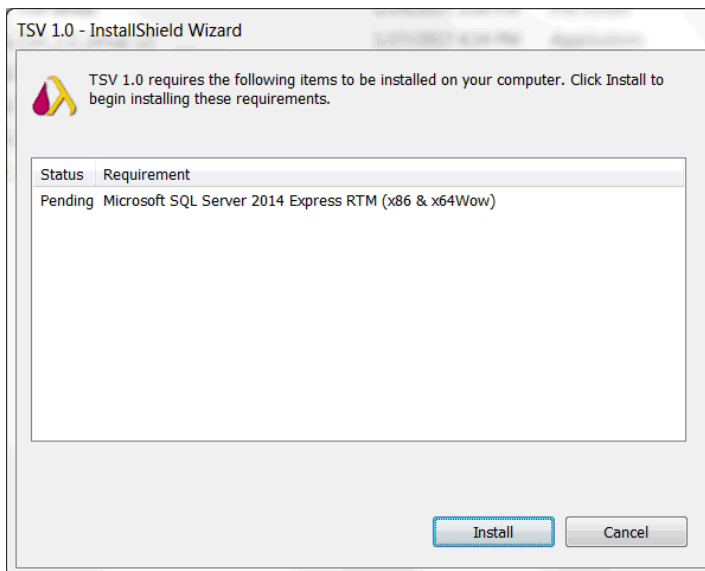


Figure 2

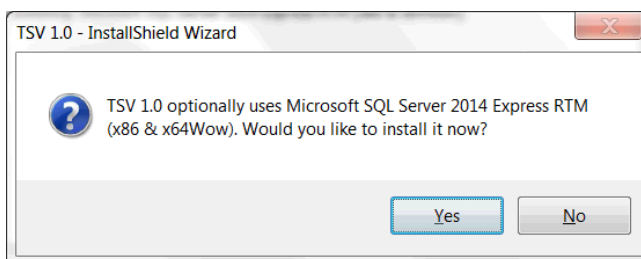


Figure 3

Please wait while the required program files are extracted:

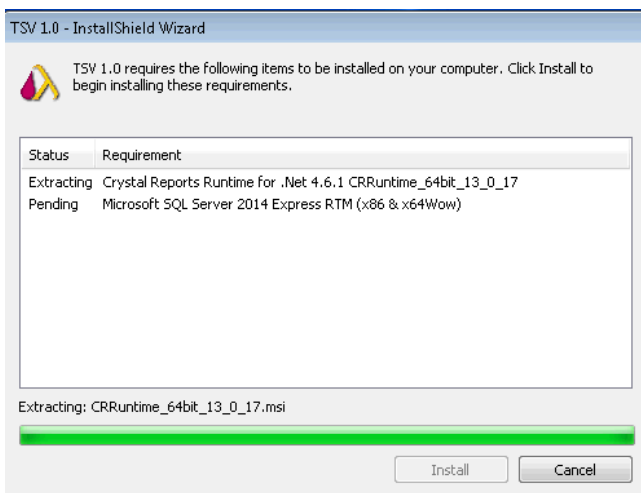


Figure 4

If you get an error such as that in Figure 5, you do not have the Microsoft .NET 3.5 Framework installed and/or enabled on your computer.

In this case, follow the steps on the next screen to activate the .NET 3.5 Framework or consult your Systems Administrator for assistance.

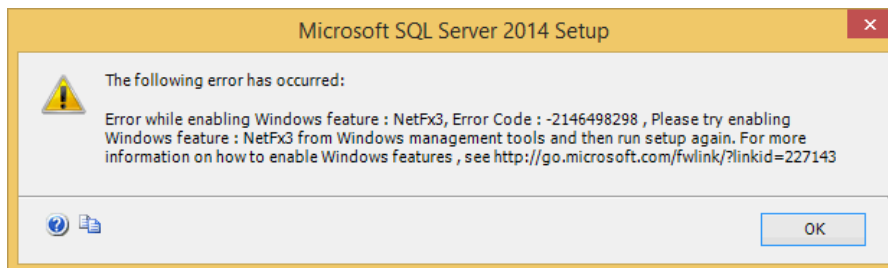



Figure 5

To fix this problem, click the Start button , click Control Panel, click Programs and Features, and then click Turn Windows features on or off. Then place a check mark in the checkbox that activates the .NET Framework 3.5 and click OK:

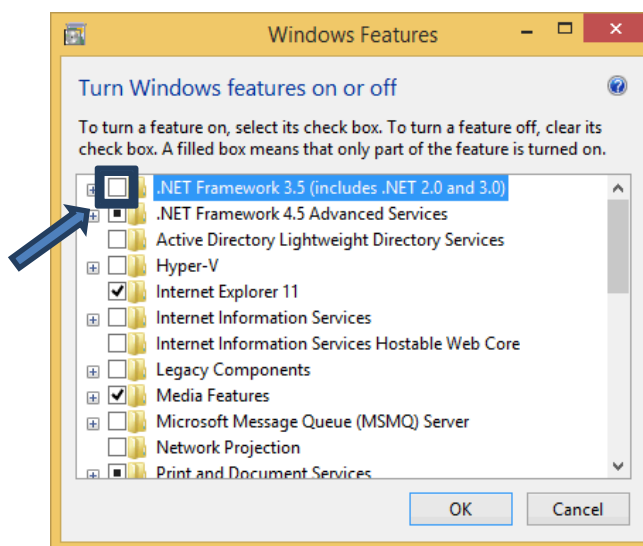


Figure 6

Note: In some cases, you may see a message asking you whether you want to reboot following the .NET installation. You do not need to reboot now, but should do so following the installation of TypeStream Visual.

It is necessary to install Crystal Report for the reporting modules. Click 'Install.'

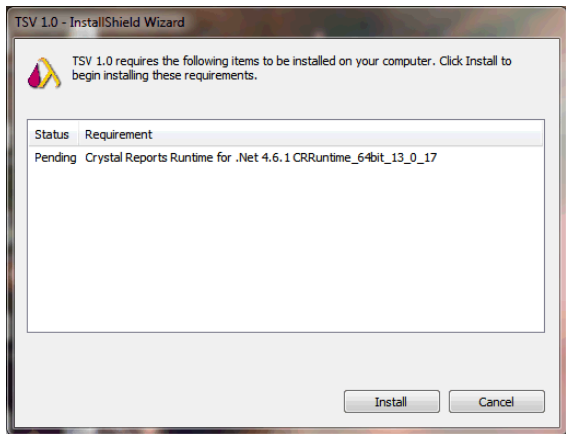


Figure 7

Crystal Reports extracts files for import/install.

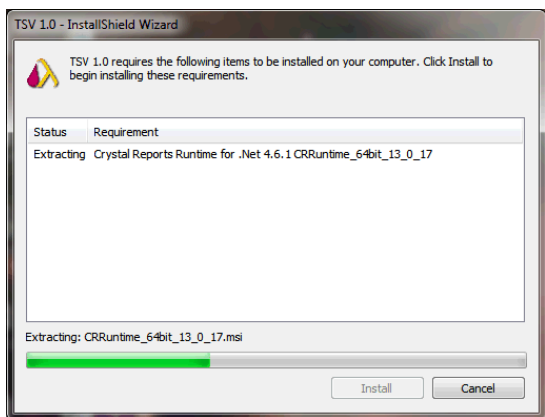


Figure 8

If an instance of SAP Crystal Reports is detected on your system, you will be asked to Remove All or Reinstall. Click "Reinstall."

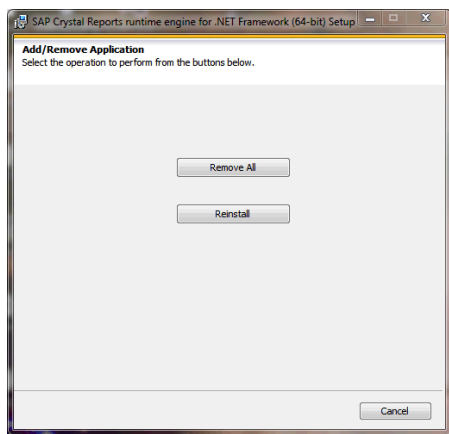


Figure 9

Click Next to install the application.

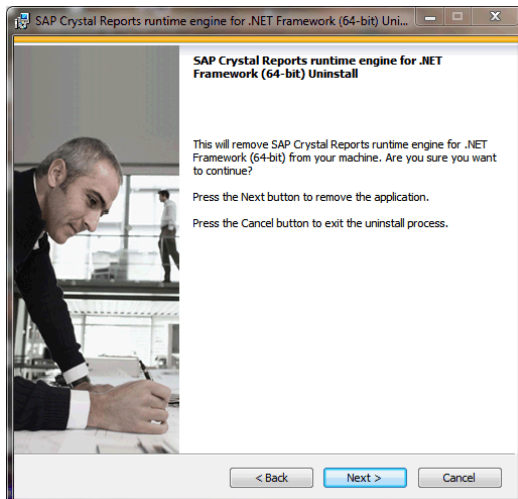


Figure 10

Please wait while Crystal Reports installs. This will take a few minutes.

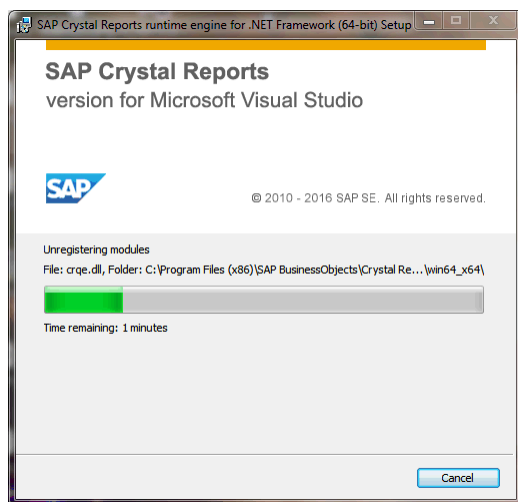


Figure 11

Click 'Finish' on the final screen. TypeStream Visual installation will continue.

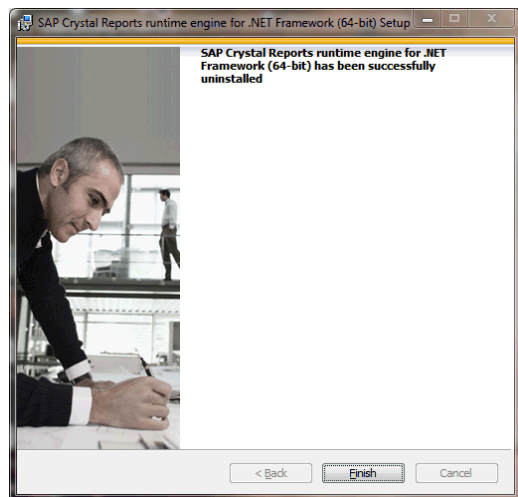


Figure 12

Step 3: Install TypeStream Visual

At the welcome screen, please wait while your system space requirements are calculated.

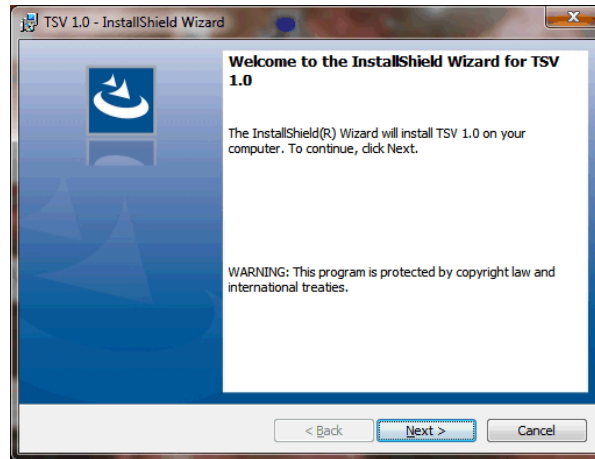


Figure 13

When the Next button is activated, click it to proceed.



Figure 14

The License Agreement is displayed. Please read and accept the terms of the License Agreement (Figure 8). Select the option, *I accept the terms in the license agreement* and click the Next button to continue.

The Destination Folder dialog box is now displayed:

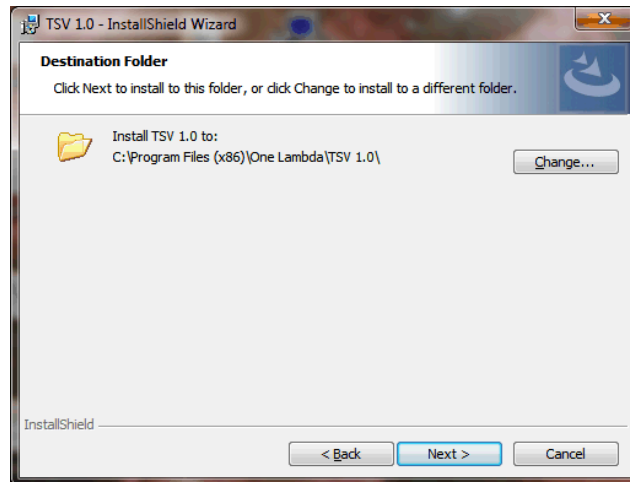


Figure 15

Verify, or change the destination folder for the TypeStream Visual program files and click the Next button to continue. The Setup Type dialog box (Figure 10) is displayed:

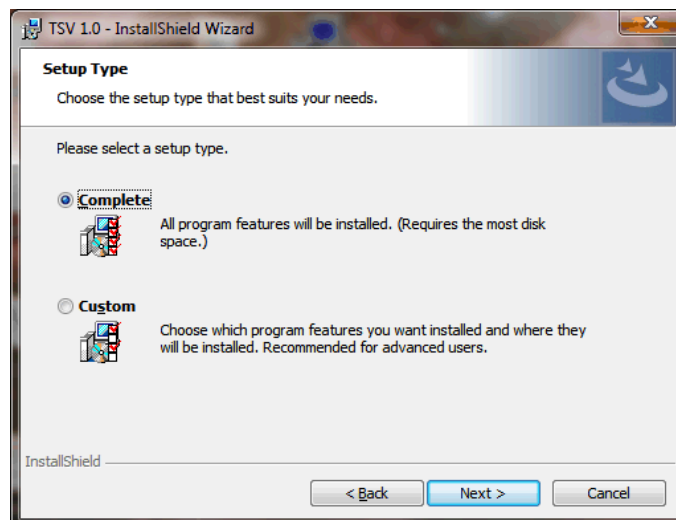


Figure 16

Select one of the following program setup types and click Next:

- **Complete (recommended):** Both the TypeStream Visual application and the TSV Database Utility are installed.
- **Custom:** You can choose to install either, or both the TypeStream Visual application (specific products) and the TSV Database Utility. If you select this option, the following dialog box is displayed:

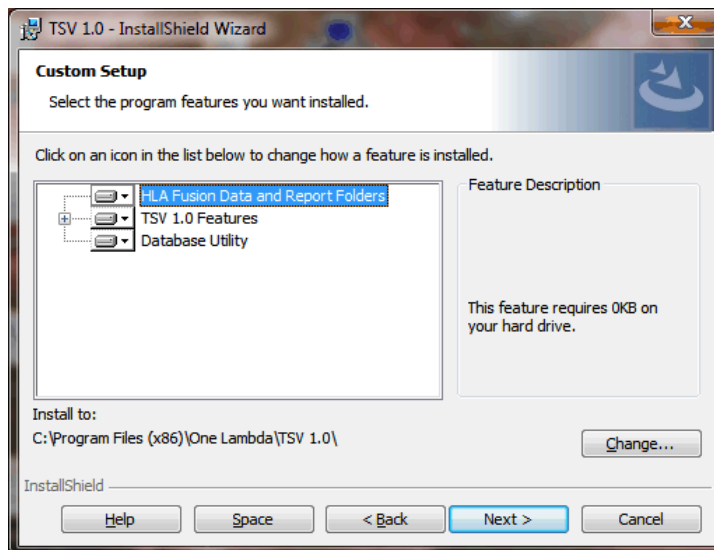


Figure 17

To expand the list of modules listed under TypeStream Visual 1.0, click the plus sign to the left.

- To modify the installation choice for any of the items displayed on the Custom Setup Screen, click the down arrow next to the item and make your selection:

To change the Current Destination Folder, click the Change button. You will then see a dialog box that allows you to specify the desired location

Note: Please note that the installation of TypeStream Visual creates a directory called C:\OLI TSV, as well as some sub directories such as data, rpt, and temp. The location of these directories is set during installation. Please do not copy, modify, or remove any files from the C:\OLI TSV\data\catalog or C:\OLI TSV\rpt directories.

After you've made your installation choices, click the Next button. The installer is now ready to install the TypeStream Visual program files:

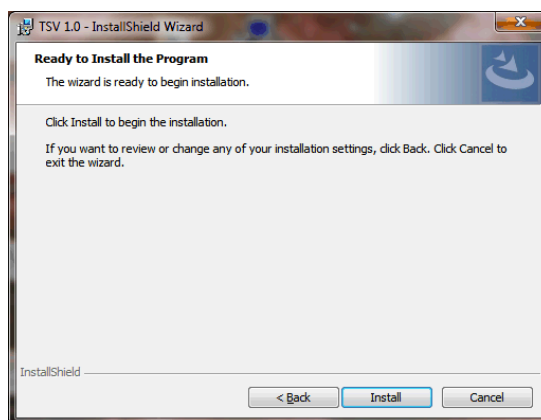


Figure 18

Click the Install button to begin installing TypeStream Visual. Please wait as installation progresses:

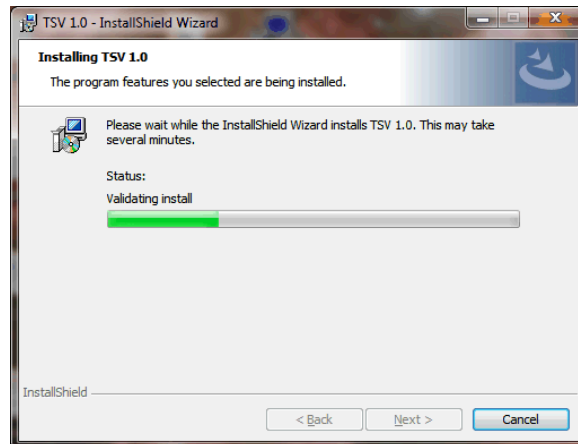


Figure 19

The Installer wizard displays an Installation Completed message when the TypeStream Visual installation is finished.

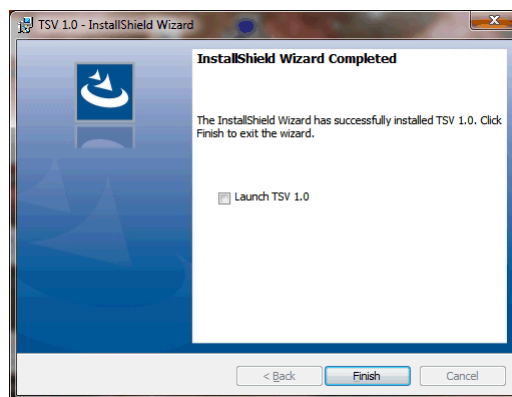


Figure 20

When installation is complete, select the check box for Launch TSV 1.0, and then click the Finish button.

The installer automatically launches the TypeStream Visual application (This may take a few moments.)

If TypeStream Visual does not start, double-click the TSV 1.0 icon on your computer desktop

Proceed to Step 4 to create and/or connect a database to the TSV application.

If the TSV database connection is not yet set up when the program is launched, (as is the case the very first time it is launched) a System Initialization message is displayed to indicate this. Click the Continue button and proceed to step 4 to create and/or connect a database to the application.

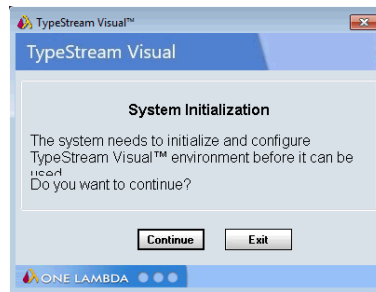


Figure 21

Step 4: Connect to a Database

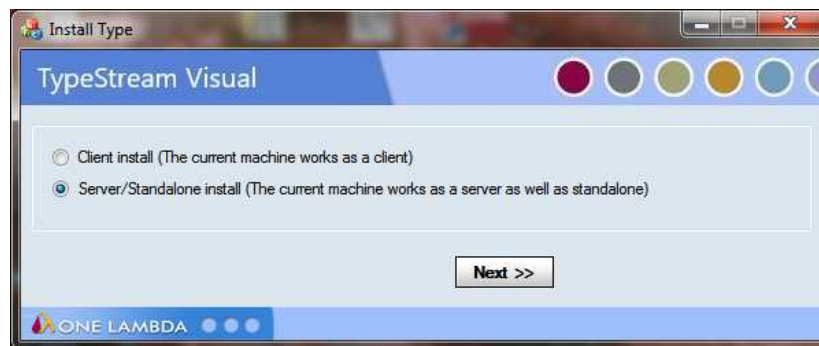


Figure 22

Select the appropriate installation type from the TSV Database Utility window that displays after TypeStream Visual has been installed (Figure 17).

Connect to a SQL Server

Note: Be sure you know which SQL server you should connect to. See Appendix, *Checklists for Installation Configurations*, for guidelines.

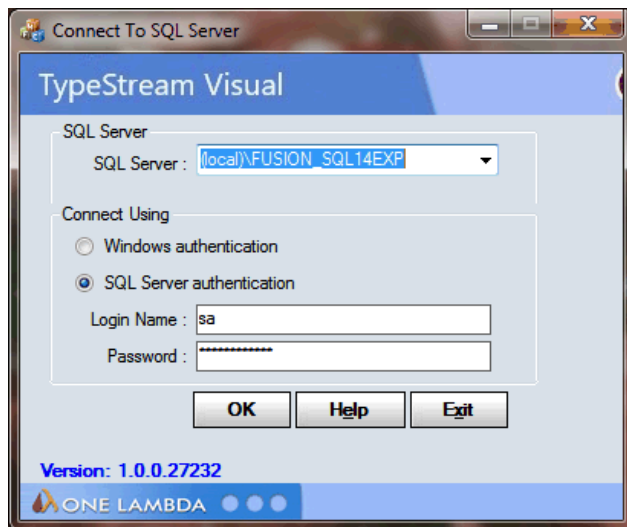


Figure 23

Select a SQL Server by doing one of the following:

- Type in the full path, directory, and server name.
- Click the drop-down arrow in the SQL Server field to display a list of local SQL Servers.
- Click the dropdown selection arrow to display a list of SQL Servers available from your network. For a first-time installation, there will be no options

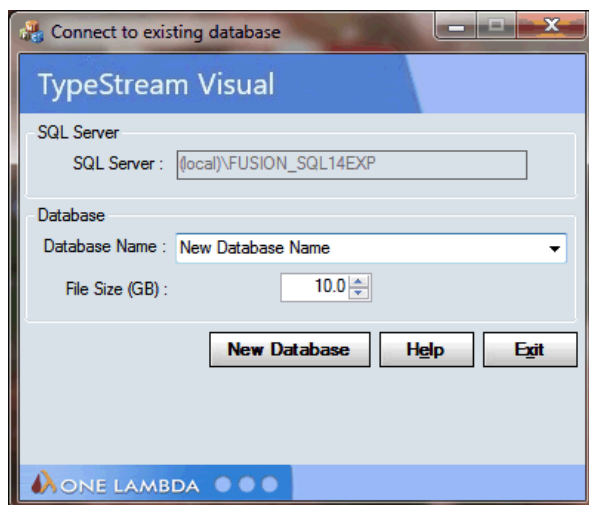


Figure 24

Note: The specified SQL Server must be allowed to receive remote connections and you must have the appropriate user ID and password to connect to it. If necessary, contact your system administrator to determine whether the specified SQL Server is configured for Windows, or for SQL Server authentication, or both.

Select a security connection type. SQL Server authentication is recommended. For SQL Server authentication, enter your Login Name and Password, (Windows authentication usually requires configuration by administrator). Now Click the OK button.

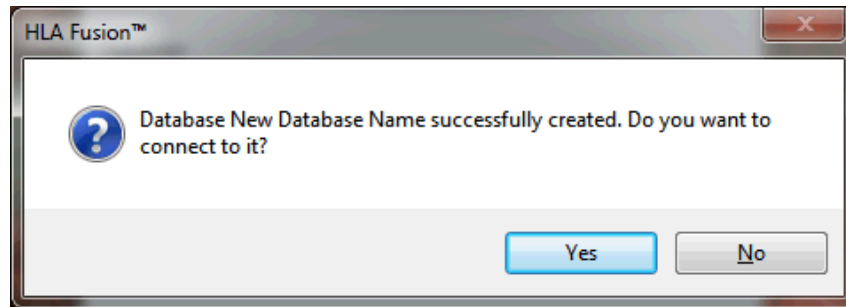


Figure 25

Connect to a Database

1. Create a new database and/or connect to an existing one

Do one of the following to connect to a database:

- To create a new database, enter a unique name for the new database, and click the New Database button. After the database has been created, click the Set button.
- To connect to an existing database, select a database from the Database Name drop-down list, select the database file size and click the Set button.

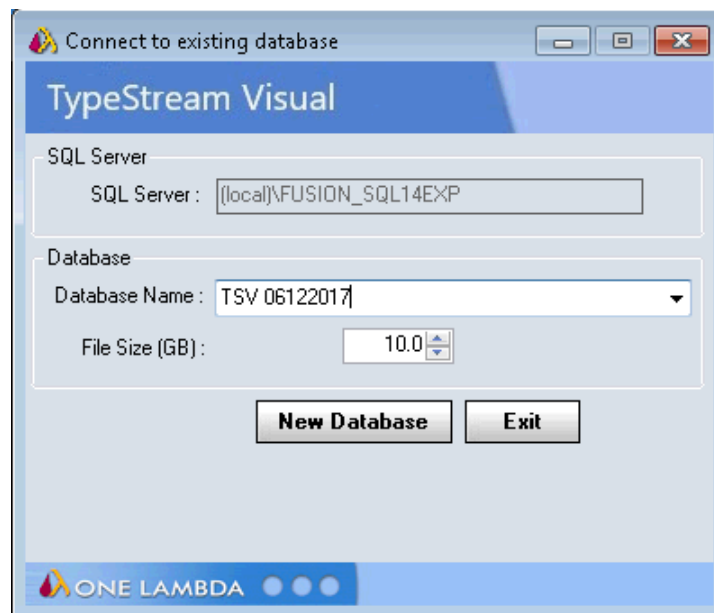


Figure 26

A confirmation message is displayed when you have successfully connected to a database:

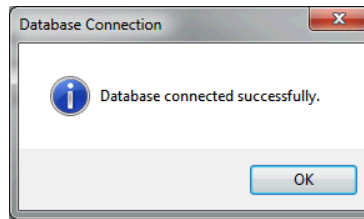


Figure 27

Click the OK button. The TypeStream Visual application should automatically launch. If it does not, double-click the TSV 1.0 icon located on your computer desktop.

2. Set Up the first user profile and lab information

When the software launches with a connection to a new database, the User Info Screen appears. Fill in all required fields, (denoted with an asterisk*) to set up a User Profile, and click the Next button.

Note: If this is the first time you have connected to this database, you will need to set up User and Lab profiles.

Figure 28

Note: The first user is always set to the **Lab Supervisor Role**. Lab name and contact information will be displayed in the footer section of the TypeStream Visual reports.

Enter all necessary information on the **Lab Profile Screen** (an asterisk * denotes required fields)

Click the **Next** button:

The screenshot shows the 'Lab Profile' configuration window for TypeStream Visual. It includes the following fields and elements:

- Lab Name*:** Your Lab's Name
- Director or Contact*:** Director
- Institute:** [Empty]
- E-mail:** Director@customer.com
- Address*:** 21200 Onnard
- Phone:** [Empty]
- City:** Woodland Hills
- Fax:** [Empty]
- State:** CA
- Staff Count:** [Empty]
- Region:** [Empty]
- Note(s):** [Empty]
- Country:** [Empty]
- Mail Server Name:** [Empty]
- Postal Code:** 91367

Below the fields is a table with the following data:

Lab Code(s)	Lab Code Description	Default
P1	Pod 1	<input type="checkbox"/>
*		

Buttons on the right side of the table: Add Lab Code, Edit Lab Code, Delete Lab Code.

At the bottom, there are fields for 'One Lambda Distributor' (Distributor) and 'Contact Email'. A 'Next >>' button is located to the right of the 'Contact Email' field.

A note at the bottom states: 'Note: The Lab information will be printed on HLA Fusion™ reports.'

Figure 29

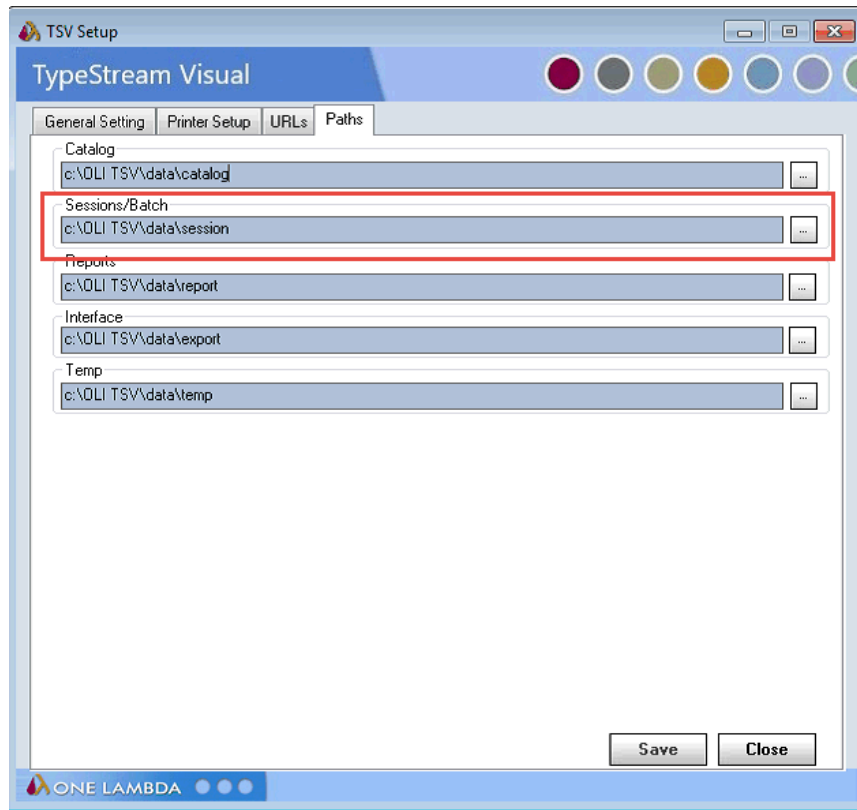
In the Security Login Screen, enter the User Name and Password you entered in the User Info Screen, (Figure 23). Click Log In to open the program.

Install Security Token

If you have obtained the security token specific to your machine from One Lambda, Inc. technical support, you may install it now. Navigate to C:→ OLI TSV → data → temp. Drag the security token into the temp folder. Every client install requires a unique .sec file to run the application.

If you have not yet obtained the security token, TypeStream Visual will function on a temporary license key for up to three days following installation. After that, no additional sessions can be imported, and no existing sessions can be reanalyzed.


Note: When setting up TypeStream Visual in a networked environment, the Sessions/Batch setting must point to a networked shared location.



Uninstalling TypeStream Visual Software

Please note that the contents of your existing TypeStream Visual database will not be impacted by removal of the TypeStream Visual application. You can continue to use your existing database with any new version of TypeStream Visual that you install. See the TypeStream Visual Release Notes or the Readme file for the most current database upgrade information.

(Optional) Backup our TypeStream Visual Database

- Within the Database Utility window, click the Database Tasks > Backup Database option.
- From the Database Name drop-down list, select a database.
- Click the Browse Button  next to the Destination field. This brings up a new window where you can select a destination folder for the database backup.

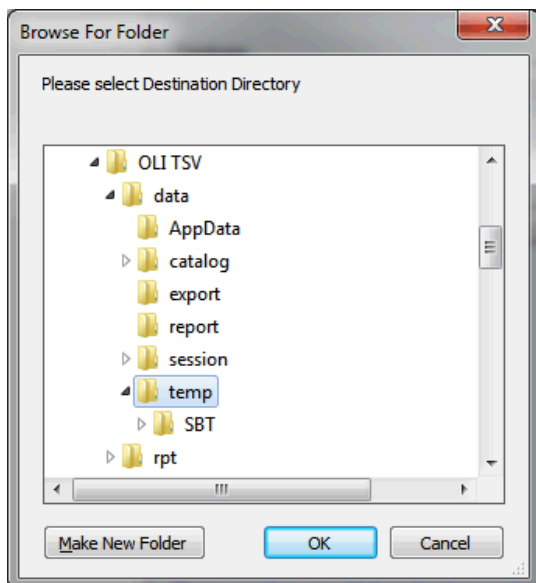


Figure 30

Note: The location you select for the database backup must be somewhere on your local hard drive. You cannot store it on your desktop, in your My Documents directory, or on a network directory.

1. Indicate a database Backup File Name in the Backup File field. The backed up files are stored with a backup (.bak) file extension.
2. Click the Backup button. After backup, the following message is displayed.

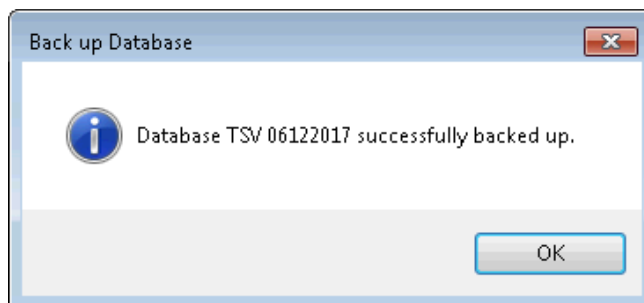


Figure 31

3. Click the OK button. The database is saved as a backup file in the location you specified.

Uninstalling the TypeStream Visual Program

From the Control Panel, Programs and Features section, select TypeStream Visual. Right click and select Uninstall.

Note: If the Remove Button is not displayed, contact your system administrator - you may not have the necessary privilege level to uninstall software programs.

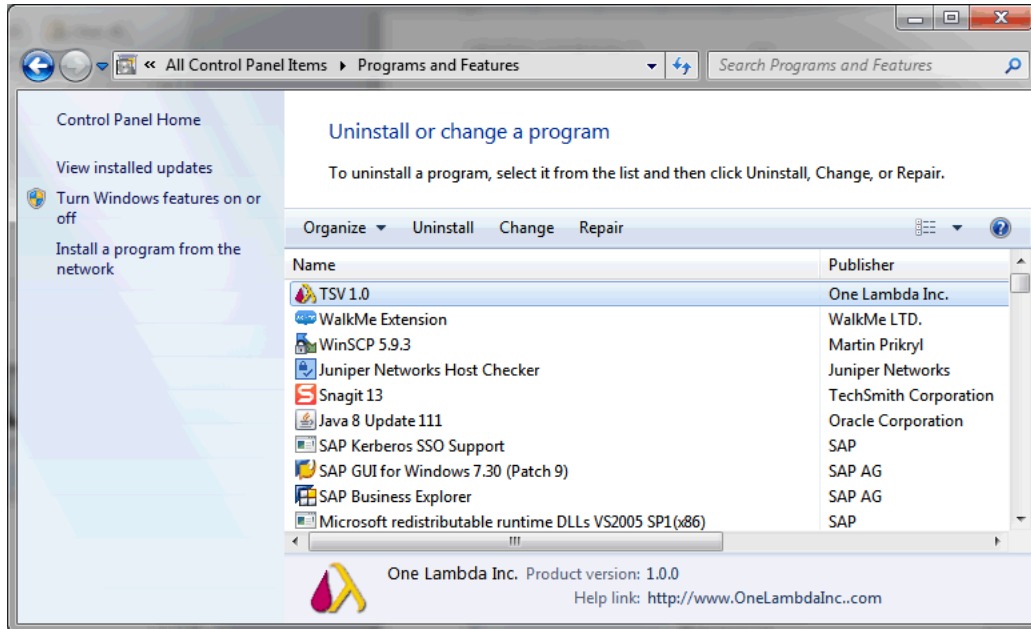


Figure 32

After uninstalling the program, verify that the program folder has been removed from C:\Program Files\One Lambda\TSV 1.0.

If not, delete the appropriate sub-folder from the TypeStream Visual folder.

Appendix A

Checklist for Installation Configuration

Note: If you've read this appendix and find you still need installation assistance, please contact One Lambda technical support. (800-822-8824 or 1lambda-techsupport@thermofisher.com).

The sections in this appendix list the key steps you should follow when installing TypeStream Visual in the described configurations. They are based on the processes for the installation type you choose and reflect certain steps that are important to follow for each one.

Server/Standalone Configurations

Follow the installation process for a Server if your computer is storing the TypeStream Visual Database and Database Utility and the other computers on the network, (the clients) will be accessing your computer to use the TSV software application. If your computer is the only computer storing and accessing the TypeStream Visual application and the TypeStream Visual Database and Database Utility are also installed on your computer, follow the installation process for a Standalone configuration.

Server/Standalone Installation Checklist

Follow the installation process for a Server if your computer is storing the TypeStream Visual Database and Database Utility

- ✓ If you are accessing a central SQL Server, make sure it is set up to receive remote connections.
- ✓ Insert the TypeStream Visual Software CD and begin the installation process.
- ✓ Make certain to install SQL Server and the .NET Framework, if prompted to do so.
- ✓ Follow all the prompts for installing TypeStream Visual, including accepting the license agreement, until the installation is complete.
- ✓ Open the TSV Database Utility, making sure to select the Server/Standalone Install for *Install Type*.
- ✓ Connect to a *local SQL Server, or a SQL server on the network* to which you have access.
- ✓ Connect to an existing database on the SQL server you selected in the previous step, or create a new database on that SQL server.
- ✓ Set up your user and lab profiles.